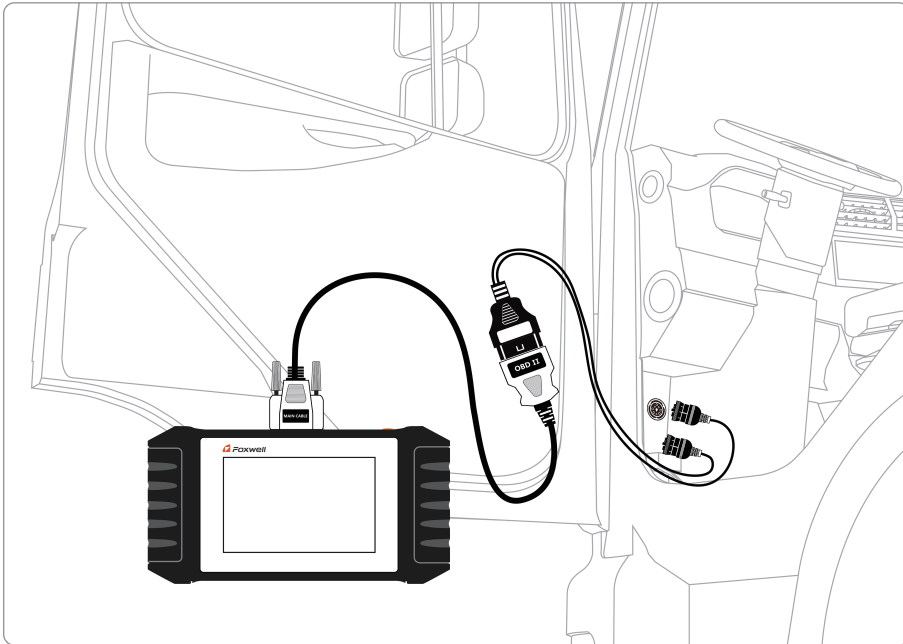


Vehicle Connection

To connect to vehicle:

1. Locate the data link connector (DLC). The DLC is generally located under the dash on the driver side of the vehicle.
2. Attached the diagnostic cable to the scanner and tighten the captive screws to ensure good connection.
3. Connect a correct adapter to the data cable according to the vehicle being serviced and plug it into the vehicle DLC.
4. Switch the ignition key to the ON position.



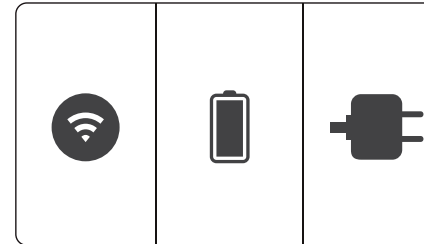
Connection Of Non OBD-II:

Vehicles with non-standard OBD-II interface need to connect the main test line to the corresponding dedicated connector

Registration

NOTE

Please make sure your network works correctly and the tablet is fully charged or connect to external power supply.



- 2 Enter one of your emails and tap **Send Code** to get a 4-digit security code. Input the code, create a password and click **Free Registration** to complete.

Register User

User name *

Verification Code *

Password *

Confirm Password *

- 1 Press **Update** from home screen of diagnostic APP, and then press **Free Registration** to start.

Staysigned in

- 3 The serial number will be recognized automatically and click **Submit** to activate the scanner.

Update

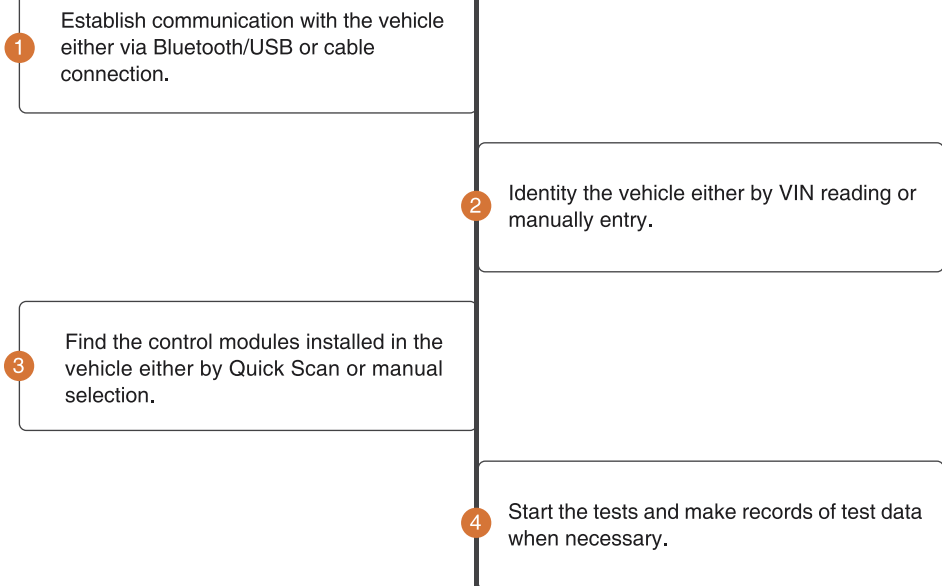
- 1 Press **Update** from home screen of diagnostic APP or press update shortcut at the tool bar.

- 2 The available updates display. Click the check box(s) in front of the software you wish to update and then click the **Update** button to download.

Update			
<input type="checkbox"/>	1	i50HDOS	V1.3.2 765.25MB <input type="button" value="Update"/>
<input type="checkbox"/>	2	CATERPILLAR	V1.10.002 33.70MB <input type="button" value="Update"/>
<input type="checkbox"/>	3	CUMMINS	V1.02.006 4.31MB <input type="button" value="Update"/>
<input type="checkbox"/>	4	DETROIT	V1.00.012 4.43MB <input type="button" value="Update"/>
<input type="checkbox"/>	5	HINO HD	V1.02.007 3.37MB <input type="button" value="Update"/>
<input type="checkbox"/>	6	INTERNATIONAL	V1.00.005 2.95MB <input type="button" value="Update"/>

Diagnostic Operations

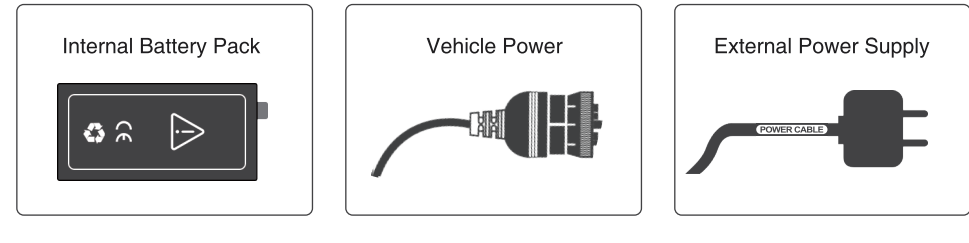
- Before start diagnosis, please make sure:
 1. The ignition switch is turned to ON position.
 2. The engine is off.
 3. The vehicle battery voltage is between 10-26 volts.
 4. The scanner is correctly connected to the vehicle.
- Don't connect or disconnect the equipments while the ignition is on or the engine is running.



Powering up the Scanner

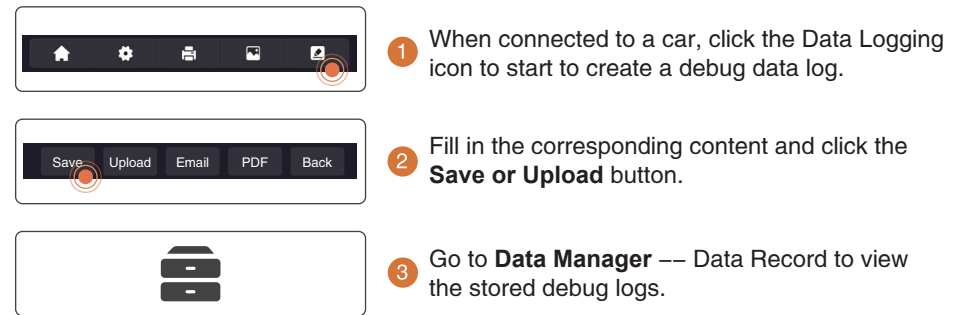
Before using the diagnostic APP of the scanner (including updating the scanner), please make sure to provide power to the scanner. In case of low battery volume, please charge it with the power cable.

The unit operates on any of the following sources:



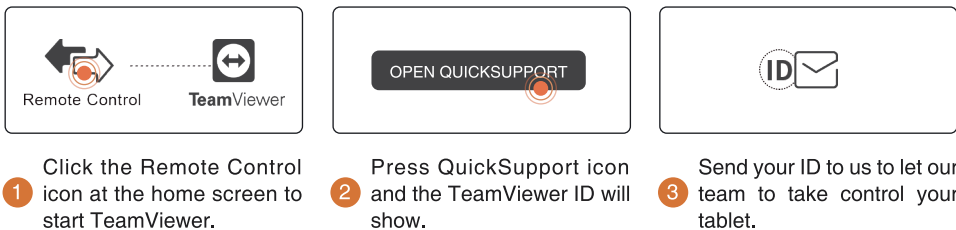
Data Logging

Data Logging collects the communication data between the scanner and the vehicle under test to help with troubleshooting of diagnostic failures.



Remote Control

Whenever you need to get remote support from Foxwell,



Contact Us

For service and support, please contact us.

- WebSite : www.foxwelltech.us
- E-mail : support@foxwelltech.com
- Service Number : + 86 - 755 - 26697229
- Fax : + 86 - 755 - 26897226



REGISTER YOUR PRODUCT AT
<http://www.foxwelltech.us/register.html>