

### To Register Through Website



- 1 Visit Foxwell website [www.foxwelltech.us](http://www.foxwelltech.us) and press **Register** icon, or go to the registration page by selecting **Support** from home page and then click **Register**.

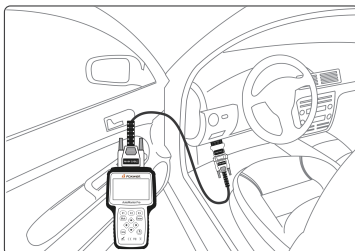


- 2 Enter one of your email addresses as your user ID and click the **Send Code** button. We will send a 4-digit verification code to the email you just entered. Find the security code in your mailbox, input the code, create a password and click **Free Registration** to complete.



- 3 Sign in to the Member Center, click **New Registration**, input the right serial number and click **Submit** to activate the product.

### Vehicle Connection

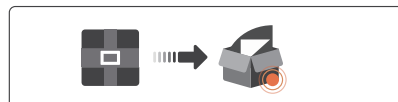


1. Locate the data link connector(DLC) under the dash on the driver side of the vehicle.
2. Connect the diagnostic cable to the scanner and plug it to the vehicle DLC.
3. Switch the ignition key to the ON position.
4. Go to Main menu to choose diagnostic software to start test.

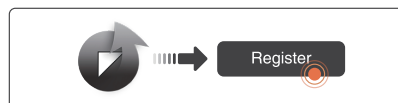
### To Register Via Update Client



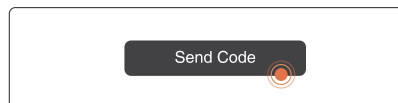
- 1 Visit our site [www.foxwelltech.us](http://www.foxwelltech.us) and then click **Support** at the home page. Click **Tools** at the support page and find the product you have to download the update client.



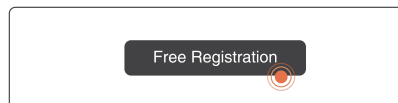
- 2 Unzip the file and find the installer to install the update client to your computer.



- 3 Click the desktop icon to launch the update client and click **Register** icon to create a Foxwell ID.



- 4 Enter one of your email addresses as your user ID and click the Send Code button. We will send a 4-digit verification code to the email you just entered.



- 5 Find the security code in your mailbox, input the code, create a password and click **Free Registration** to complete.

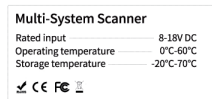


- 6 Sign in your Foxwell account and select **Activation**. Input a serial number or click the **Read** icon to read the SN from the scanner. Click **Activate** button to activate.

### Serial Number

To find the serial number:

1. On the back of the main unit.

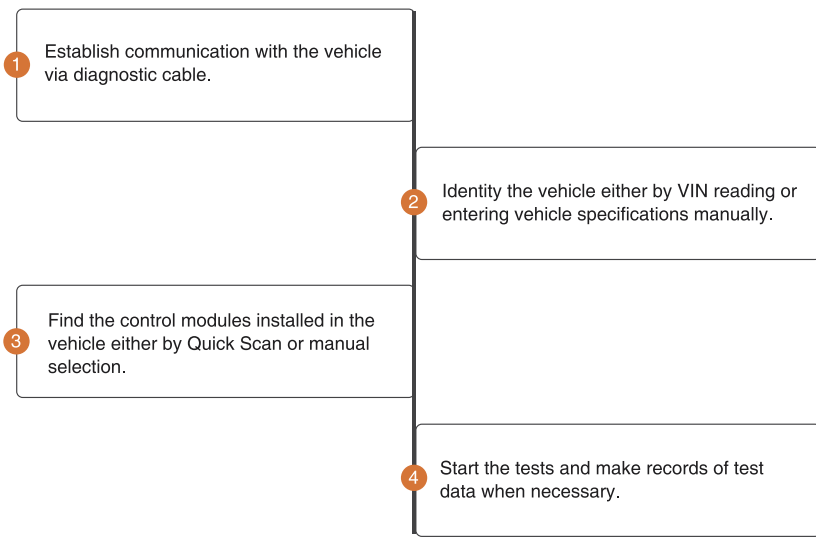


2. In the scanner Settings-About page.



## Diagnostic Operations

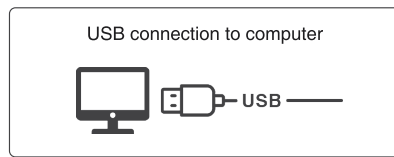
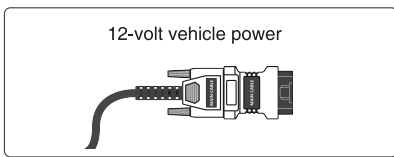
- Before start diagnosis, please make sure:
  1. The ignition switch is turned to ON position.
  2. The engine is off.
  3. The vehicle battery voltage is between 10-14 volts.
  4. The scanner is correctly connected to the vehicle.
- Don't connect or disconnect the equipments while the ignition is on or the engine is running.



## Powering up the scanner

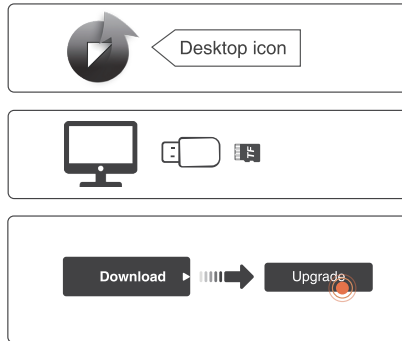
Before using the scanner, make sure to provide power to the scanner.

The unit operates on any of the following sources:



## Update

Before updating, please make sure you have created a Foxwell ID and your network works correctly.



- 1 Launch the update tool **FoxAssist** by double clicking the desktop icon and login with your Foxwell ID and password.
- 2 Connect the TF card to the computer with the TF card reader provided.
- 3 Select **Download** then all the updates applicable to your tool display. Click the check box(s) in front of the software you wish to update and then click **Upgrade** button to start updating.

## To Print Test Results

Vehicle test results stored in the SD card can be printed through computer.



## Contact Us

For service and support, please contact us.

- WebSite : [www.foxwelltech.us](http://www.foxwelltech.us)
- E-mail : [support@foxwelltech.com](mailto:support@foxwelltech.com)
- Service Number : + 86 - 755 - 26697229
- Fax : + 86 - 755 - 26897226



REGISTER YOUR PRODUCT AT  
<http://www.foxwelltech.us/register.html>